



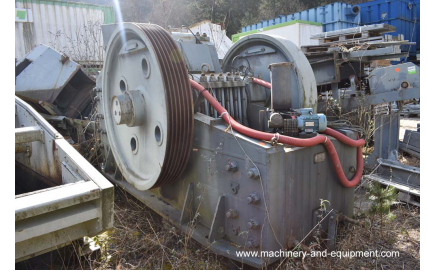
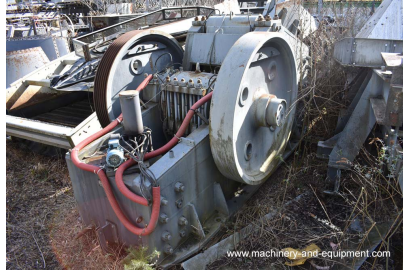
EuroConsult Dimitrios Piretzidis | Mörikestraße 9 | D - 71522 Backnang

Datasheet

Prod. no. ZE 118

Date 25.07.2024

GHH Double Toggle Jaw Crusher Type 86



TECHNICAL SPECIFICATIONS

Manufacturer: GHH

Description: Double toggle jaw crusher

Version: Heavy duty version

Type: 86

Year of construction: 1968

Throughput capacity: 45 - 55 cbm/h with crushing gap 80 - 100 mm

Feed opening: 800 x 630 mm

Maximum feed size: approx. 450 mm

Drive power: 112 kW

Weight: 27.000 kg

SPECIFIC COMMENT

Complete semi-mobile plant consisting of:

- GHH Double toggle jaw crusher
- Feed hopper
- Apron feeder 1.000 x 5.000 mm
- Cleaning belt (under the apron conveyor) 800 x 8.000 mm
- Solid steel construction

If you are interested, we would be happy to send you a detailed offer with photo documentation.

Yours sincerely,

EuroConsult Dimitrios Piretzidis